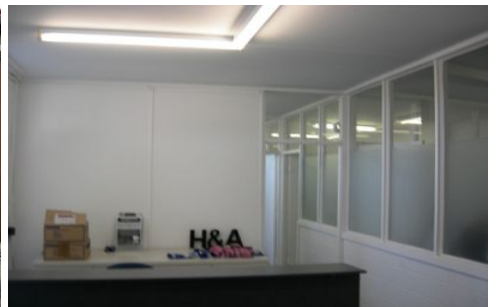




CRABTREES

REAL ESTATE



1/10 Remont Court CHELTENHAM VIC

3 

Neat and clean office warehouse with large mezzanine in Cheltenham of a total of 168m2 approx

Features

- * Street frontage for easy access
- * Container height roller door
- * Office of 58m2 approx
- * Both male and female toilets
- * 3 onsite car spaces
- * Generous mezzanine with good height

Price : annual
Building Size : 110 sqm
View : <https://www.crabtrees.com.au/lease/vic/bayside/cheltenham/commercial/industrial/5860788>

<https://www.crabtrees.com.au>

Crabtrees Real Estate is built on history, reputation and expertise. We offer a level of knowledge others can't match.