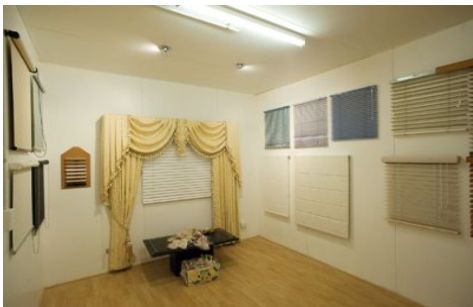




CRABTREES

REAL ESTATE



1-3 Joyce Street SPRINGVALE VIC

Auction - Wed 10th December @ 12 noon on site

Modern warehouse premises with two clean tenants, at settlement will be returning approx \$63,000 per annum net, both tenancies with street frontage:

1 Joyce Street:

- * Leased to DDC Tool & Plastic Industries Pty Ltd
- * Existing 2 year lease expires December 2009, tenant has a 3 year option,
- * Current return of \$24,840 with a CPI increase on 1st January 2009
- * Tenancy area of 414 sqm approx.

3 Joyce Street:

Price : POA
Building Size : 1006 sqm
View : <https://www.crabtrees.com.au/sale/vic/south-east/springvale/commercial/industrial/5860873>



Gavin Dumas
(03) 95678888

<https://www.crabtrees.com.au>

Crabtrees Real Estate is built on history, reputation and expertise. We offer a level of knowledge others can't match.