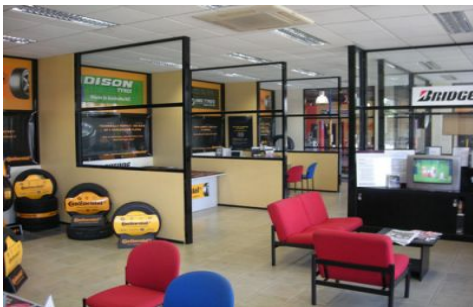




# CRABTREES

REAL ESTATE



## 287 Burwood Highway BURWOOD EAST VIC

Outstanding main road super site on super busy Burwood Highway features:

- \* 70 metre frontage to Burwood Highway!
- \* showroom / work shop / warehouse of 1060 sqm
- \* front and rear roller doors and glass tilt doors provide great access
- \* Large concrete forecourt and rear yard, ideal for car parking or outside storage / display
- \* Mixed Use zone allows for multiple uses

Contact Gavin Dumas 0411 878 423 or Andrew Loudon 0422 618 975.

**Price** : annual  
**Building Size** : 1060 sqm  
**Land Size** : 2845 sqm  
**View** : <https://www.crabtrees.com.au/lease/vic/east/burwood-east/commercial/development/5860954>



**Gavin Dumas**  
**(03) 95678888**

<https://www.crabtrees.com.au>

Crabtrees Real Estate is built on history, reputation and expertise. We offer a level of knowledge others can't match.