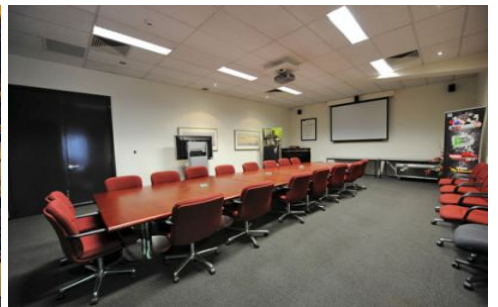
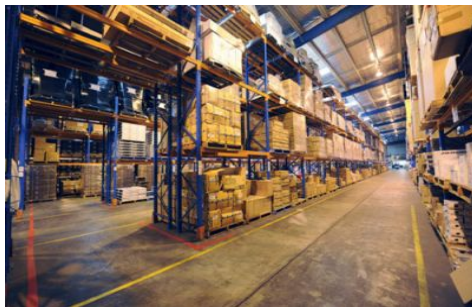




CRABTREES

REAL ESTATE



178-184 Boundary Road BRAESIDE VIC

Fantastic Corporate Industrial Facility benefitting from several additions, renovations/refurbishment of the existing improvements.

Features:

- * Quality offices over two levels of 2115 sqm
- * The offices include an impressive tiled lobby, are a mix of meeting rooms, open plan areas, training rooms, executive offices and boardrooms and include great staff amenities
- * Both office levels have been refurbished in the last few years and provide an excellent overall working environment.
- * The warehouse is complimented by a spare parts area

Price : POA
Building Size : 6400 sqm
Land Size : 12219 sqm
View : <https://www.crabtrees.com.au/sale/vic/braeside/braeside/commercial/industrial/5861040>



Gavin Dumas
(03) 95678888

<https://www.crabtrees.com.au>

Crabtrees Real Estate is built on history, reputation and expertise. We offer a level of knowledge others can't match.