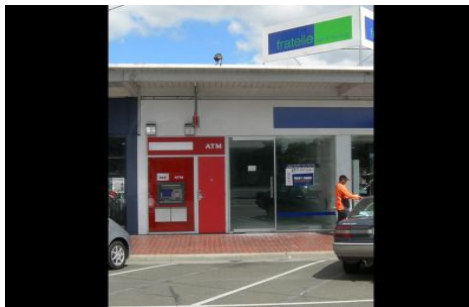




CRABTREES

REAL ESTATE



Shop 2/411 Blackburn Road MOUNT WAVERLEY VIC

Fantastic opportunity to lease a first class shop in the exceptionally popular Pinewood Shopping Centre and features:

- * Total retail area of 106 sqm approx with 21 m depth
- * Excellent exposure to Blackburn Road
- * Has plumbing points from the rear to middle of shop
- * Pinewood has a large Coles Supermarket, Vintage Cellars & the Waverley Cinemas
- * Adjacent to hairdresser, fish & chip shop, bakery
- * Suit many uses

Contact Luke Pitcher 0417 055 578 or Chris McKenzie 0418 321 065.

Price : annual
Building Size : 106 sqm
View : <https://www.crabtrees.com.au/lease/vic/east/mount-waverley/commercial/showrooms/bulky-goods/5861122>



Luke Pitcher
(03) 95678888

<https://www.crabtrees.com.au>

Crabtrees Real Estate is built on history, reputation and expertise. We offer a level of knowledge others can't match.