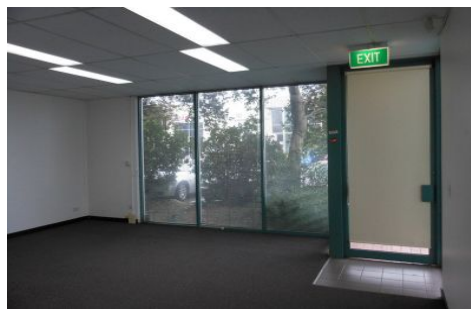




CRABTREES

REAL ESTATE



127/45 Gilby Road MOUNT WAVERLEY VIC

Warehouse with office accommodation in Axxess Corporate Park, features include:

- * 245sqm approximately
- * Includes 33sqm office approximately
- * Container height roller door
- * Male & Female toilets
- * On site parking
- * Almost immediate access to the Monash Freeway
- * Blue chip neighbours
- * Choice of 2 on site cafes
- * On site child care

Price : annual
Building Size : 251 sqm
View : <https://www.crabtrees.com.au/lease/vic/east/mount-waverley/commercial/industrial/5861126>

For all inspections and enquiries contact:

Casper Janholt 0448 026 186
Luke Pitcher 0417 055 578

<https://www.crabtrees.com.au>

Crabtrees Real Estate is built on history, reputation and expertise. We offer a level of knowledge others can't match.