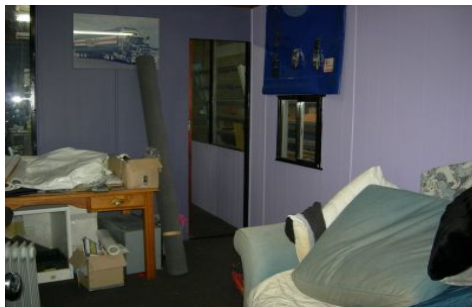




CRABTREES

REAL ESTATE



4/52 Smith Road SPRINGVALE VIC

This large factory/warehouse located in Springvale is well worth a look.

Features Include:

- * 467 Sqm approx
- * 3 phase power
- * Good natural light
- * Roller door access
- * Male and female toilets
- * Painted factory floor
- * Kitchenette
- * Small office
- * Good car/truck access

For more details and inspections contact
Andrew Loudon 0422 618 975

Price : annual
Building Size : 467 sqm
View : <https://www.crabtrees.com.au/lease/vic/south-east/springvale/commercial/industrial/5861135>

<https://www.crabtrees.com.au>

Crabtrees Real Estate is built on history, reputation and expertise. We offer a level of knowledge others can't match.