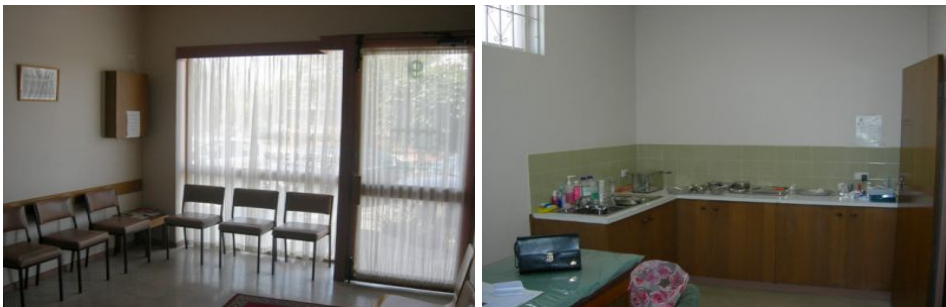




CRABTREES

REAL ESTATE



9 Berrima Street OAKLEIGH EAST VIC

This Office/Clinic located in Oakleigh East is your chance to move into Oakleigh

Features Include:

- * 70 sqm of Office/Medical Clinic with permits
- * On Site parking
- * Rear access
- * Kitchenette
- * Air conditioning

Price : annual
Building Size : 70 sqm
Land Size : 186 sqm
View : <https://www.crabtrees.com.au/lease/vic/east/oakleigh-east/commercial/healthcare/5861167>

Inspect Today

For further details and inspections contact:

Stuart Gill 0417 322 080

Alex Ivory 0418 358 700

<https://www.crabtrees.com.au>

Crabtrees Real Estate is built on history, reputation and expertise. We offer a level of knowledge others can't match.