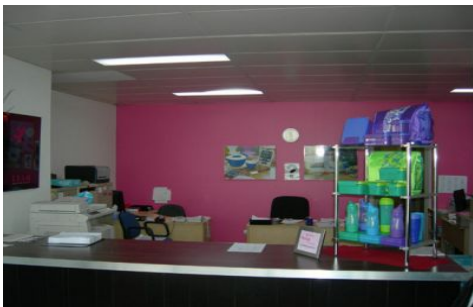




CRABTREES

REAL ESTATE



49 Cleeland Road OAKLEIGH SOUTH VIC

This office warehouse located in Oakleigh is your next building

Features Include:

- * 720 sqm approx
- * 36 sqm of office approx
- * Great onsite parking
- * Roller door access
- * Reasonable Height
- * Great access to Huntingdale and Centre road

Inspections will not disappoint
for more details and inspections contact:
Andrew Loudon 0422 618 975
Trevor Hanna 0408 870 190

Price : annual
Building Size : 720 sqm
View : <https://www.crabtrees.com.au/lease/vic/south-east/oakleigh-south/commercial/industrial/5861196>



Joe Monea
(03) 95678888

<https://www.crabtrees.com.au>

Crabtrees Real Estate is built on history, reputation and expertise. We offer a level of knowledge others can't match.