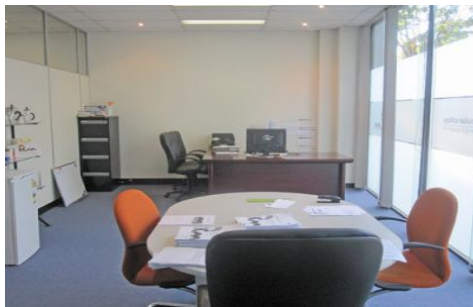




CRABTREES

REAL ESTATE



77 Atherton Road OAKLEIGH VIC

Quality two storey fitted offices on the tree lined Atherton Road in the heart of Oakleigh.

Office space from 742sqm - 1484sqm approx

Exceptional fitout including:

- * Executive offices
- * Board room and meeting/training rooms
- * Open work areas
- * 4 Kitchen areas
- * Entrance foyer

Price : annual
Building Size : 1484 sqm
View : <https://www.crabtrees.com.au/lease/vic/east/oakleigh/commercial/offices/5861287>

<https://www.crabtrees.com.au>

Crabtrees Real Estate is built on history, reputation and expertise. We offer a level of knowledge others can't match.