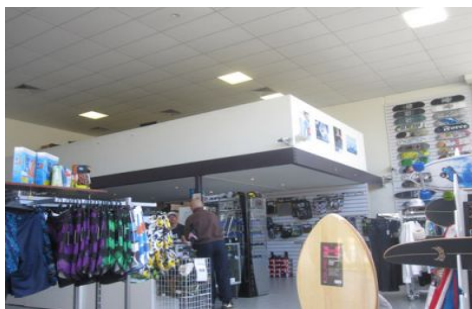




# CRABTREES

REAL ESTATE



## 1/107 Highbury Road BURWOOD VIC

Outstanding opportunity to secure a building of approximately 377sqm with showroom, office and warehouse all under the one roof fronting onto Highbury Road.

**Price** : Contact Agent  
**Building Size** : 377 sqm  
**View** : <https://www.crabtrees.com.au/lease/vic/east/burwood/commercial/industrial/5861386>

Features Include:

- \* Light filled showroom/office of 180sqm approx
- \* Office of 37sqm approx overlooking the showroom
- \* Warehouse of 160sqm approx with optional mezzanine of 98sqm approx
- \* Excellent internal clearance through the building
- \* Container height roller door at rear of property

<https://www.crabtrees.com.au>

Crabtrees Real Estate is built on history, reputation and expertise. We offer a level of knowledge others can't match.