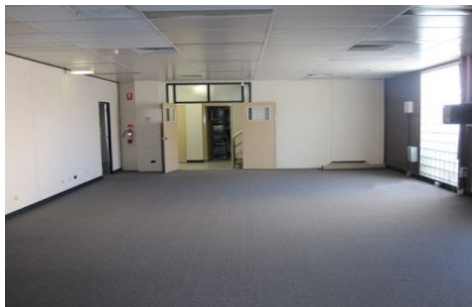




CRABTREES

REAL ESTATE



10 Summit Road NOBLE PARK VIC

Excellent office warehouse with good internal clearance.

Other features include:

- * 2 motorised roller doors
- * Well presented and appointed offices of 280sqm approx
- * 19 on site car spaces
- * Conveniently located just off Princes Highway

For more information and inspections:

Stuart Gill 0417 322 080

Matthew Marenko 0409 355 123

Price : annual
Building Size : 1187 sqm
View : <https://www.crabtrees.com.au/lease/vic/south-east/noble-park/commercial/industrial/5861393>

<https://www.crabtrees.com.au>

Crabtrees Real Estate is built on history, reputation and expertise. We offer a level of knowledge others can't match.