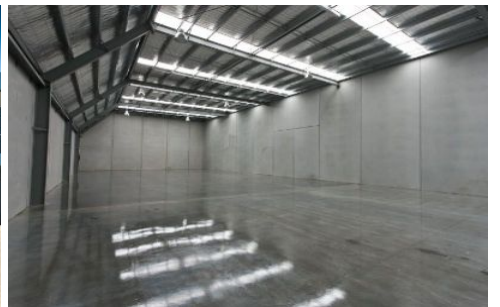
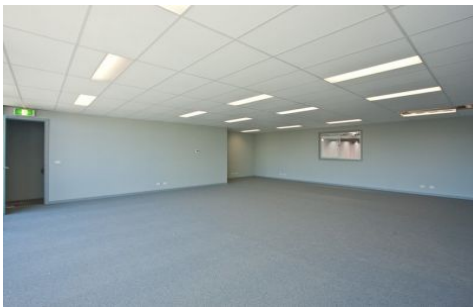




CRABTREES

REAL ESTATE



480-490 Clayton Road CLAYTON VIC

Brand New Main Road Office/Warehouse/Showroom from 809 - 1040sqm approx. Flexible options with office/showroom fitout.

Price : ONLY 2 LEFT!

View : <https://www.crabtrees.com.au/lease/vic/east/clayton/commercial/industrial/5861399>

Features include:

- * Includes office/showroom of 100 sqm approx
- * Excellent internal clearance in warehouse
- * Ample onsite car parking
- * Container height roller door
- * Excellent exposure to Clayton Road

For more information and inspections please contact:

<https://www.crabtrees.com.au>

Crabtrees Real Estate is built on history, reputation and expertise. We offer a level of knowledge others can't match.