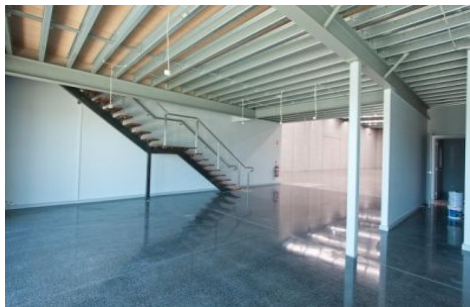




# CRABTREES

REAL ESTATE



## 484-486 Clayton Road CLAYTON VIC

Brand New Main Road Office/Warehouse/Showroom  
880sqm approx. Flexible options with office showroom  
fitout.

Features Include:

- \* Includes office/showroom of 101 sqm approx
- \* Excellent internal clearance
- \* 12 Carparks Onsite
- \* Container height roller door
- \* Excellent exposure on Clayton Road

Stuart Gill 0417 322 080

**Price** : Contact Agent  
**Building Size** : 880 sqm  
**View** : <https://www.crabtrees.com.au/lease/vic/east/clayton/commercial/industrial/5861401>

<https://www.crabtrees.com.au>

Crabtrees Real Estate is built on history, reputation and expertise. We offer a level of knowledge others can't match.