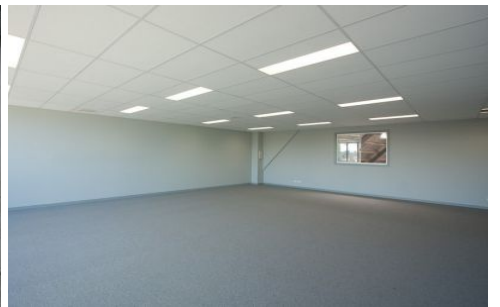
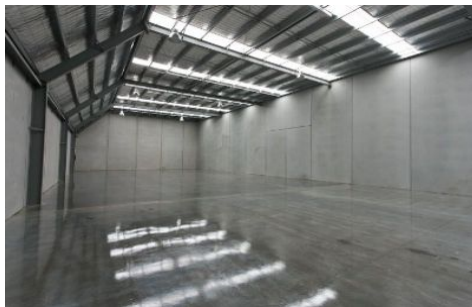
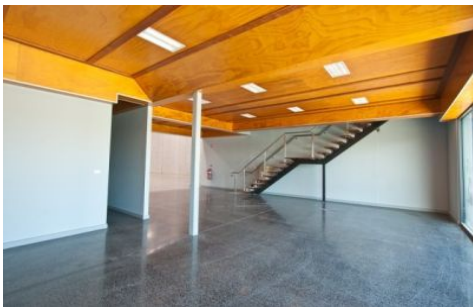




CRABTREES

REAL ESTATE



480-482 Clayton Road CLAYTON VIC

Brand New Main Road Office/Warehouse/Showroom
809sqm approx. Flexible options with office showroom
fitout.

Features Include:

- * Includes office/showroom of 99sqm approx
- * Excellent internal clearance
- * 11 Carparks Onsite
- * Container height roller door
- * Excellent exposure on Clayton Road

Stuart Gill 0417 322 080

Price : Contact Agent
Building Size : 809 sqm
View : <https://www.crabtrees.com.au/lease/vic/east/clayton/commercial/industrial/5861433>

<https://www.crabtrees.com.au>

Crabtrees Real Estate is built on history, reputation and expertise. We offer a level of knowledge others can't match.