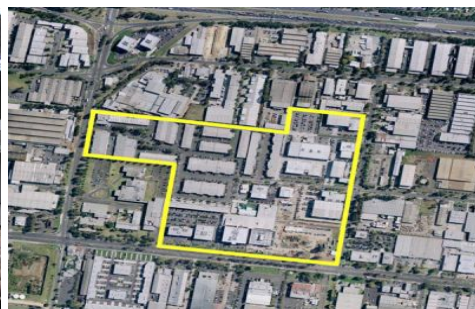




CRABTREES

REAL ESTATE



Modern office warehouse in popular Axxess Corporate Park.

- * 787m2 approx
- * Includes 210sqm office
- * New carpet
- * Good sized warehouse
- * 2 roller doors
- * Very good condition
- * Great location close to Monash Freeway
- * Choice of 2 on site cafes

For all inspections and enquiries contact:
Luke Pitcher - 0417 055 578

Price : annual
Building Size : 787 sqm
View : <https://www.crabtrees.com.au/lease/vic/east/mount-waverley/commercial/industrial/5861461>



Luke Pitcher
(03) 95678888

<https://www.crabtrees.com.au>

Crabtrees Real Estate is built on history, reputation and expertise. We offer a level of knowledge others can't match.