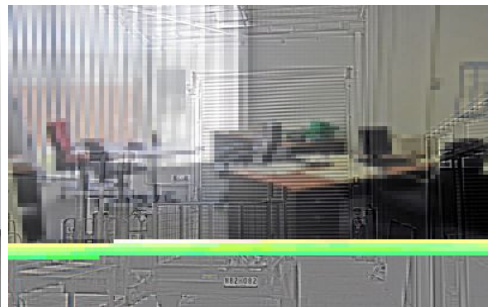
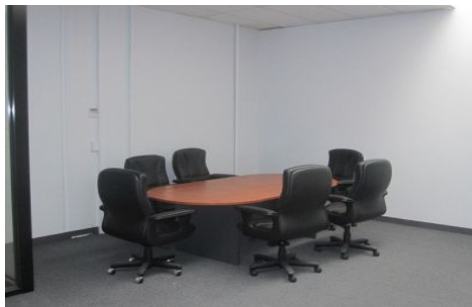
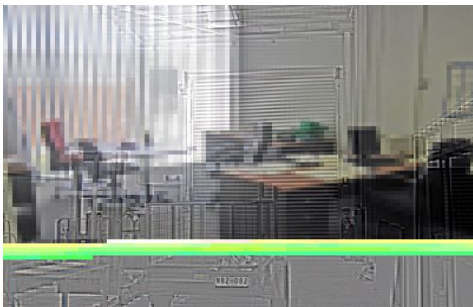




CRABTREES

REAL ESTATE



21 Moller Street OAKLEIGH VIC

Modern office warehouse of approximately 358sqm only minutes from Huntingdale train station and shops.

Features Include:

- * Container height roller door
- * Ground floor showroom/office of 49sqm
- * 1st floor air conditioned offices and store room of 93sqm
- * Warehouse is high and bright
- * Street frontage

Matthew Marenko 0409 355 123
Alex Ivory 0418 358 700

Price : annual
Building Size : 358 sqm
View : <https://www.crabtrees.com.au/lease/vic/east/oakleigh/commercial/industrial/5861482>

<https://www.crabtrees.com.au>

Crabtrees Real Estate is built on history, reputation and expertise. We offer a level of knowledge others can't match.