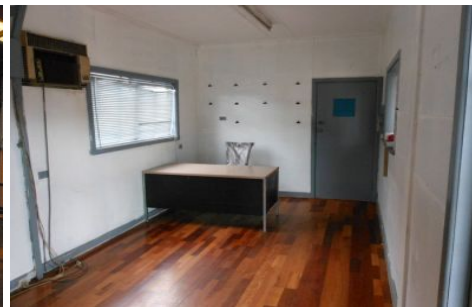




CRABTREES

REAL ESTATE



1/47 Sarton Road CLAYTON VIC

Positioned just off Princes Hwy & Westall Rd, this factory/warehouse includes;

- * Building of 350sqm (approx)
- * Includes office space of 20 sqm (approx)
- * High bay lighting
- * 3 phase power
- * Car parking at front of premises
- * Available Now

For further details and inspections contact:
Alex Ivory - 0418 358 700
Luke Pitcher - 0417 055 578

Price : annual
Building Size : 350 sqm
View : <https://www.crabtrees.com.au/lease/vic/east/clayton/commercial/industrial/5861486>

<https://www.crabtrees.com.au>

Crabtrees Real Estate is built on history, reputation and expertise. We offer a level of knowledge others can't match.