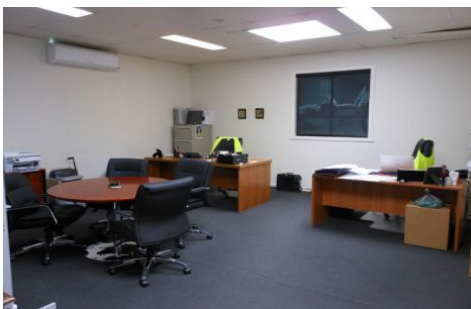




# CRABTREES

REAL ESTATE



## 17 Kareela Street MORDIALLOC VIC

This modern and well-presented office/warehouse offers a fantastic opportunity to move your business into these well-maintained premises.

Features include:

\*Office space of 94sqm over two levels, heated, air-conditioned and separate reception area

\*Warehouse space of 370sqm

\*Container height roller door to warehouse

\*Warehouse internal clearance of 6.5m approx

\*6 on site car parks in secure yard

**Price** : 31500  
**Building Size** : 464 sqm  
**View** : <https://www.crabtrees.com.au/lease/vic/bayside/mordialloc/commercial/industrial/5861496>

<https://www.crabtrees.com.au>

Crabtrees Real Estate is built on history, reputation and expertise. We offer a level of knowledge others can't match.