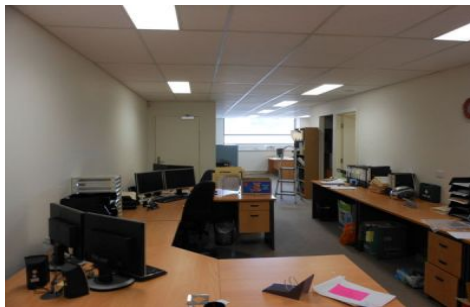
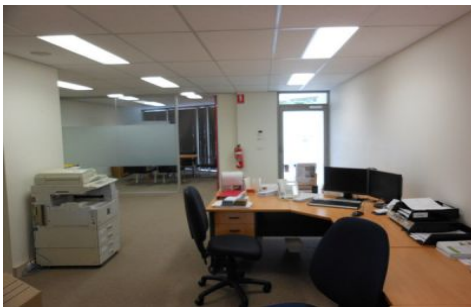




CRABTREES

REAL ESTATE



4 Windsor Avenue MOUNT WAVERLEY VIC

Unique Office/Showroom in a great central location.

Features include:

- * Carpeted and air conditioned
- * Immediately opposite Jordanville train station
- * Rear car parking
- * Partitioned boardroom or office
- * Male & female bathrooms with wheelchair access

Contact:
Luke Pitcher 0417 055 578
Stuart Gill 0417 322 080

Price : annual
Building Size : 88 sqm
View : <https://www.crabtrees.com.au/lease/vic/east/mount-waverley/commercial/offices/5861525>



Luke Pitcher
(03) 95678888

<https://www.crabtrees.com.au>

Crabtrees Real Estate is built on history, reputation and expertise. We offer a level of knowledge others can't match.