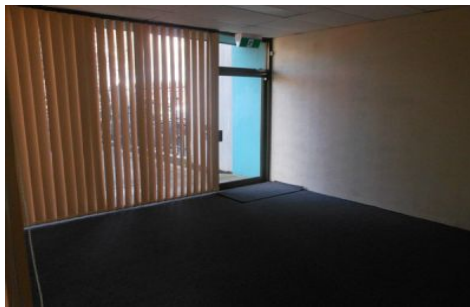




CRABTREES

REAL ESTATE



1/7 Neutron Place ROWVILLE VIC

If you're looking for a quality, functional and solid factory then this warehouse is IDEAL for you!

Property features:

- * 248sqm warehouse including 20sqm of office
- * Accessible to trucks and containers
- * High roller door
- * High Bay lighting
- * Great natural light
- * 4 on-site car parking places

Price : annual
Building Size : 248 sqm
View : <https://www.crabtrees.com.au/lease/vic/east/rowville/commercial/industrial/5861626>

<https://www.crabtrees.com.au>

Crabtrees Real Estate is built on history, reputation and expertise. We offer a level of knowledge others can't match.