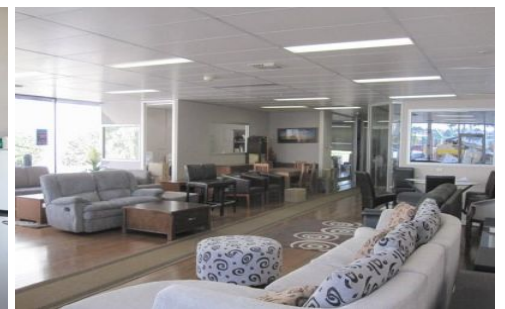




# CRABTREES

REAL ESTATE



## 410 Princes Highway NOBLE PARK VIC

Great opportunity to occupy a main road warehousing facility with office and showroom of approximately 4,124sqm.&#13;

&#13;  
Features include:&#13;  
&#13;

\* Includes office and showroom of approximately 313sqm&#13;

&#13;  
\* Warehouse of 3,811sqm approx&#13;

&#13;  
\* Excellent internal clearance&#13;

&#13;  
\* Multiple wide and high roller doors&#13;

&#13;  
\* Approximately 845sqm of additional canopy area&#13;

&#13;

**Price** : All offers considered

**Building Size** : 4124 sqm

**View** : <https://www.crabtrees.com.au/sale/vic/south-east/noble-park/commercial/showrooms/bulky-goods/5861729>

<https://www.crabtrees.com.au>

Crabtrees Real Estate is built on history, reputation and expertise. We offer a level of knowledge others can't match.