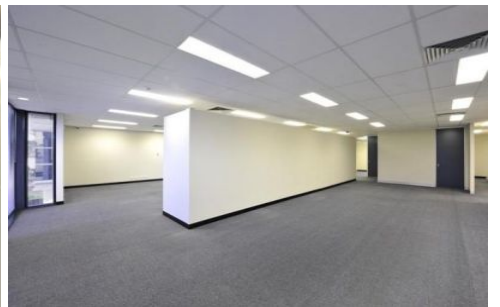




CRABTREES

REAL ESTATE



2/200 Wellington Road CLAYTON VIC

Superb office/showroom/warehouse with great exposure to Wellington Road features:

-
- Partitioned and air conditioned offices/showroom
-
- High and bright warehouse
-
- Open plan areas ideal for training areas
-
- Toilets & amenities on both levels
-
- 17 car spaces
-
- Great location close to Monash Uni and major transport links
-
-

Contact managing agents for inspection and further

Price : annual
Building Size : 797 sqm
View : <https://www.crabtrees.com.au/lease/vic/east/clayton/commercial/industrial/5861748>

<https://www.crabtrees.com.au>

Crabtrees Real Estate is built on history, reputation and expertise. We offer a level of knowledge others can't match.