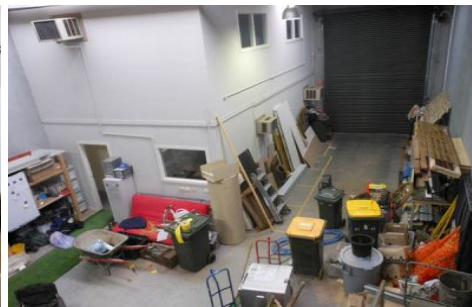
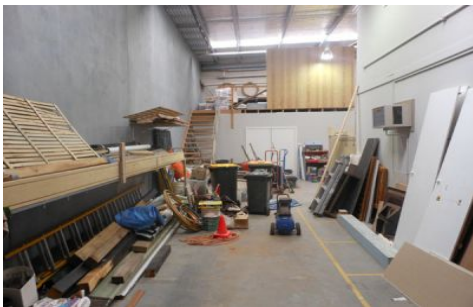




CRABTREES

REAL ESTATE



41/41-49 Norcal Road NUNAWADING VIC

Located only a short walk from Nunawading Train Station, this office/warehouse is ready to be occupied. #13;

#13;

Features: #13;

#13;

+ Automatic roller door access #13;

#13;

+ High bay lighting #13;

#13;

+ Bonus mezzanine of 17sqm #13;

#13;

+ Air conditioned offices over two levels #13;

#13;

+ On site parking #13;

#13;

For further information or an inspection please contact your agents at Crabtrees: #13;

Price : annual

Building Size : 184 sqm

View : <https://www.crabtrees.com.au/lease/vic/east/nunawading/commercial/industrial/5861758>

<https://www.crabtrees.com.au>

Crabtrees Real Estate is built on history, reputation and expertise. We offer a level of knowledge others can't match.