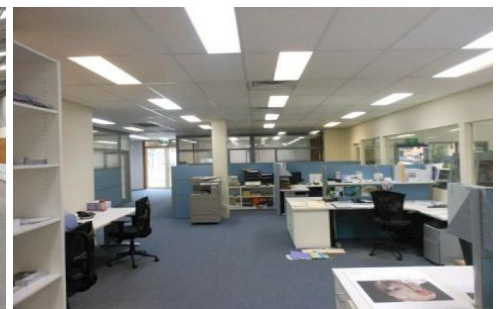




CRABTREES

REAL ESTATE



6 Brough Street SPRINGVALE VIC

Good quality office & warehouse in excellent order.

Some of the major features include:

- Dual motorised Roller Doors (of which 1 is a Loading Dock)

- Internal clearspan warehouse height 6.7m - 7.1m

- Excellent office space of approx 370sqm

- Bonus Mezzanine area of 200sqm

Please call Crabtrees for further information and inspections

Stuart Gill 0417 322 080

Price : 110000
Building Size : 1590 sqm
View : <https://www.crabtrees.com.au/lease/vic/south-east/springvale/commercial/industrial/5861805>

<https://www.crabtrees.com.au>

Crabtrees Real Estate is built on history, reputation and expertise. We offer a level of knowledge others can't match.