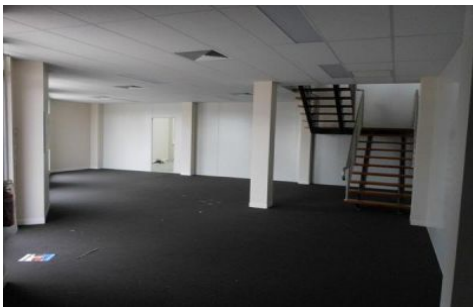




CRABTREES

REAL ESTATE



15/51 Keysborough Avenue KEYSBOROUGH VIC

TWO LEVEL OFFICES WITH WAREHOUSE!!

- + Brand new buildings situated super close to Cheltenham Road, Springvale Rd & Westall Ext.
- + Quality internal finishes including floor coverings and air-conditioning
- + Motorised roller door access
- + On site car spaces
- + 265m² approx of high clearance warehouse
- + Located within an established business park
- + Available now

Price : PRICE REDUCTION
Building Size : 557 sqm
View : <https://www.crabtrees.com.au/sale/vic/south-east/keysborough/commercial/industrial/5861816>

Call your exclusive agent at Crabtrees Real Estate:
Stuart Gill 0417 322 080
Andrew Loudon 0422 618 975

<https://www.crabtrees.com.au>

Crabtrees Real Estate is built on history, reputation and expertise. We offer a level of knowledge others can't match.