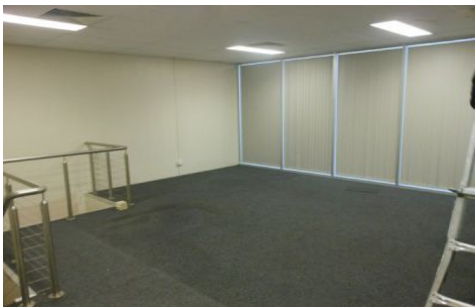




CRABTREES

REAL ESTATE



9/820 Princes Highway SPRINGVALE VIC

Located on busy Princes Hwy within a modern business park this property is a winner in every sense.

Features:

- + Exceptionally high clearance
- + Container height motorised roller door
- + Abundance of natural light
- + Air conditioned & newly painted office of 86sqm total
- + On site parking

For further information or an inspection please contact:

Casper Janholt 0448 026 186
Alex Ivory 0418 358 700

Price : annual
Building Size : 239 sqm
View : <https://www.crabtrees.com.au/lease/vic/south-east/springvale/commercial/industrial/5861828>

<https://www.crabtrees.com.au>

Crabtrees Real Estate is built on history, reputation and expertise. We offer a level of knowledge others can't match.