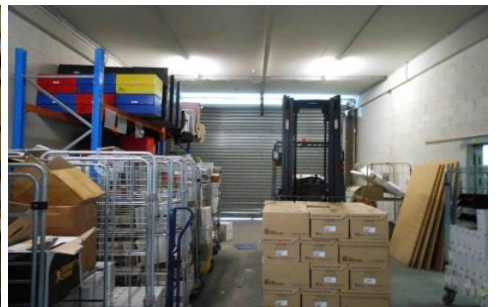
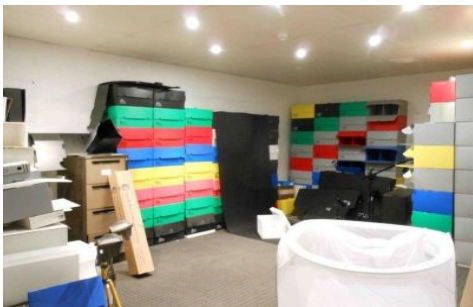




CRABTREES

REAL ESTATE



8 Edgecombe Court MOORABBIN VIC

Quality built office warehouse of approximately 1,663sqm with potential for ground floor showroom.

Features:

+ Air conditioned offices of approximately 274sqm

+ Motorised roller door access

+ Large warehouse with high bay lights and 3 phase power

+ On-site parking

Ideally located in Edgecombe Court in the heart of Moorabbin's Industrial precinct.

Price : \$1,590,000 / \$115,000

Building Size : 1663 sqm

View : <https://www.crabtrees.com.au/sale/vic/bayside/moorabbin/commercial/industrial/5861833>

<https://www.crabtrees.com.au>

Crabtrees Real Estate is built on history, reputation and expertise. We offer a level of knowledge others can't match.