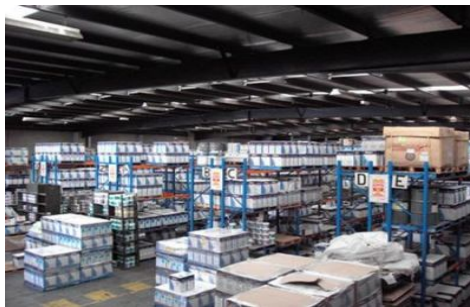
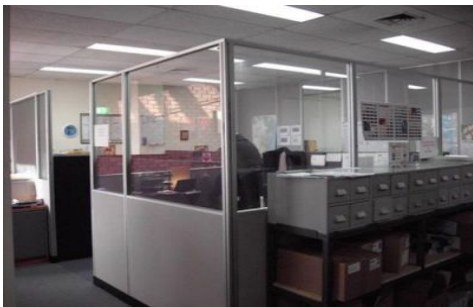




CRABTREES

REAL ESTATE



51 Winterton Road CLAYTON VIC

Situated in the heart of Clayton. An Office/Warehouse that won't come around often.

- * Well located industrial facility
- * Just off Princes Highway
- * Next door to Westall Road
- * Warehouse area 1520sqm approx
- * Office area 305sqm approx

For more details please contact

Stuart Gill 0417 322 080
Gavin Dumas 0411 878 423

Price : annual
Building Size : 1825 sqm
View : <https://www.crabtrees.com.au/lease/vic/east/clayton/commercial/industrial/5861884>

<https://www.crabtrees.com.au>

Crabtrees Real Estate is built on history, reputation and expertise. We offer a level of knowledge others can't match.