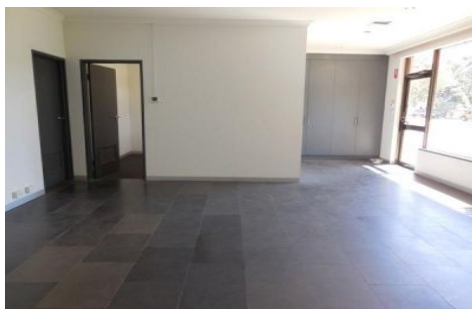




CRABTREES

REAL ESTATE



25-27 DeHavilland Road MORDIALLOC VIC

High quality office warehouse of 1,765sqm* with a huge amount of extras.

Features:

- + Air-conditioned fitted office of 108sqm*
- + Above average power supply and gas supply**
- + 2 motorised roller shutter doors
- + Front concrete apron for 15 cars or unloading containers

Ideally located just off Lower Dandenong Road close to Warrigal Road, Nepean Highway and Boundary Road.

Call now to inspect.

Price : \$1,625,000 / \$115,000
Building Size : 1765 sqm
Land Size : 2326 sqm
View : <https://www.crabtrees.com.au/sale/vic/bayside/mordialloc/commercial/industrial/5861947>

<https://www.crabtrees.com.au>

Crabtrees Real Estate is built on history, reputation and expertise. We offer a level of knowledge others can't match.