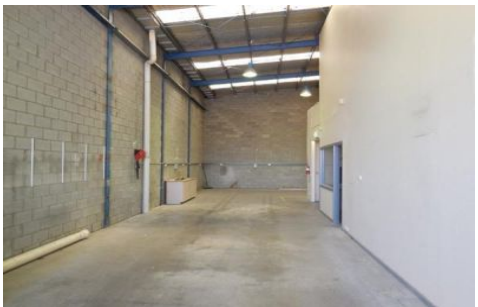




# CRABTREES

REAL ESTATE



## 1/22 Regent Street SPRINGVALE VIC

High clearance warehouse with office showroom of 256sqm\* located with street frontage and it own driveway just off Westall Road, Springvale.

Features:

- + Includes A/C office/showroom of 94sqm\*
- + Alarm system with cameras
- + Container height access
- + Warehouse clearance up to 6.7m\*

Matthew Marenko 0409 355 123  
Steven Salopek 0400 341 226

**Price** : Only \$400 p/w  
**Building Size** : 256 sqm  
**View** : <https://www.crabtrees.com.au/lease/vic/south-east/springvale/commercial/industrial/5862012>

<https://www.crabtrees.com.au>

Crabtrees Real Estate is built on history, reputation and expertise. We offer a level of knowledge others can't match.