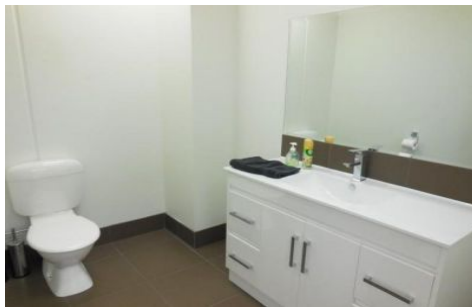




# CRABTREES

REAL ESTATE



## E3/Cnr Westall Rd & Centre Road CLAYTON VIC

Quality high tech office warehouse of 209sqm\* with bonus mezzanine of 97sqm\* ideally located in the next to the Ikea and Harvey Norman Homemaker Centre.

Features:

- + Includes a/c office of 92sqm\*
- + Functional mezzanine for technical or clean area
- + Motorised roller shutter door
- + Modern toilet and kitchen amenity on both levels
- + Alarm system with cameras

Great location close to Princes Highway, Blackburn Road

**Price** : Contact Agent  
**Building Size** : 302 sqm  
**View** : <https://www.crabtrees.com.au/sale/vic/east/clayton/commercial/industrial/5862023>

<https://www.crabtrees.com.au>

Crabtrees Real Estate is built on history, reputation and expertise. We offer a level of knowledge others can't match.