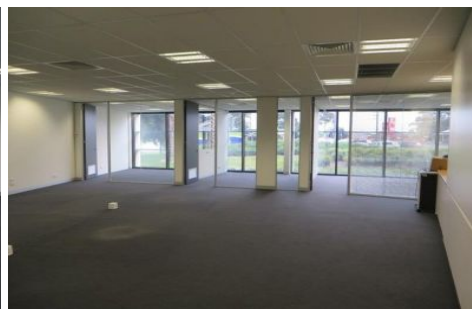
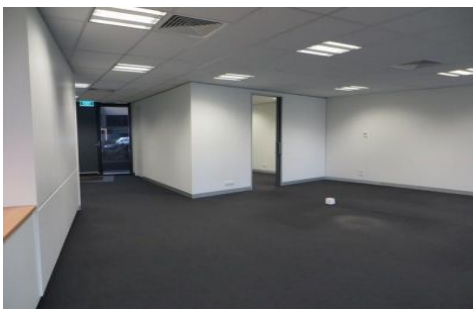




# CRABTREES

REAL ESTATE



## 11/202-220 Ferntree Gully Road NOTTING HILL VIC

Outstanding ground floor office suite built to the highest standard.

Conveniently located on the corner of Ferntree Gully Road and Clayton Road with only a short distance to the Monash Freeway, Blackburn Road and Dandenong Road.

With a number of cafes within walking distance and close to the Notting Hill Hotel, Monash University and Mount Waverley Train Station this office presents an excellent opportunity to stop paying rent and purchase your very own office suite. And with interest rates at an all time low, why wouldn't you?

Features:

+ 171sqm of ground floor office space

**Price** : \$615,000  
**Building Size** : 171 sqm  
**View** : [https://www.crabtrees.com.au/sale/vic/ea  
st/notting-hill/commercial/offices/58620  
39](https://www.crabtrees.com.au/sale/vic/east/notting-hill/commercial/offices/5862039)



**Luke Pitcher**  
**(03) 95678888**

<https://www.crabtrees.com.au>

Crabtrees Real Estate is built on history, reputation and expertise. We offer a level of knowledge others can't match.