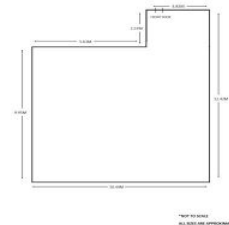




Suites 3&4/10A Atherton Road, Oakleigh
FLOOR PLAN



Suites 3&4/10A Atherton Road OAKLEIGH VIC

Located in a great central Oakleigh location this office suite overlooks Warrawee Park and also features the following:

- + Huge amount of daily passing traffic
- + Open plan/flexible space
- + Ducted air conditioning
- + Excellent natural light
- + Shared toilet & kitchen amenities
- + Fully carpeted throughout

For further information or inspections please contact:

Price : annual
Building Size : 118 sqm
View : <https://www.crabtrees.com.au/lease/vic/east/oakleigh/commercial/offices/5862044>