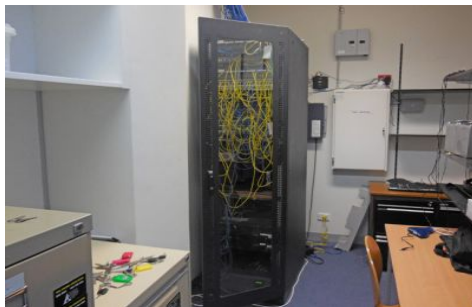




CRABTREES

REAL ESTATE



77 Atherton Road OAKLEIGH VIC

16

Quality two storey fitted offices on the tree lined Atherton Road in the heart of Oakleigh.

Office space from 742sqm - 1484sqm approx

* Open planned work space plus executive offices and meeting rooms

* Internal kitchens and toilet amenities

* Impressive entrance foyer

* Ample on site car parks

Ideally located in Oakleigh Central featuring major retailers, banks, bus and train station as well as Princes Highway and the Monash Freeway.

Price : \$296,000 annual
Building Size : 1484 sqm
View : <https://www.crabtrees.com.au/lease/vic/east/oakleigh/commercial/offices/5862045>

<https://www.crabtrees.com.au>

Crabtrees Real Estate is built on history, reputation and expertise. We offer a level of knowledge others can't match.