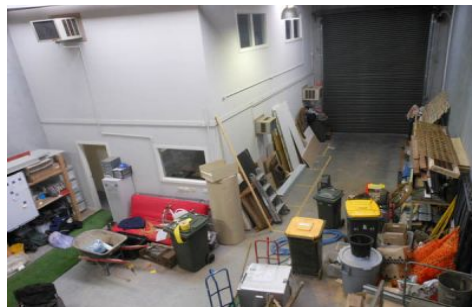




# CRABTREES

REAL ESTATE



## 41/41-49 Norcal Road NUNAWADING VIC

Located only a short walk from Nunawading Train Station, this fantastic office warehouse also features the following:

Features:

- + Automatic roller door access
- + High bay lighting
- + Air conditioned office of 72sqm over 2 levels
- + Bonus mezzanine of 17sqm
- + Air conditioned offices over two levels
- + On site parking

**Price** : annual  
**Building Size** : 184 sqm  
**View** : <https://www.crabtrees.com.au/lease/vic/east/nunawading/commercial/industrial/5862100>

<https://www.crabtrees.com.au>

Crabtrees Real Estate is built on history, reputation and expertise. We offer a level of knowledge others can't match.