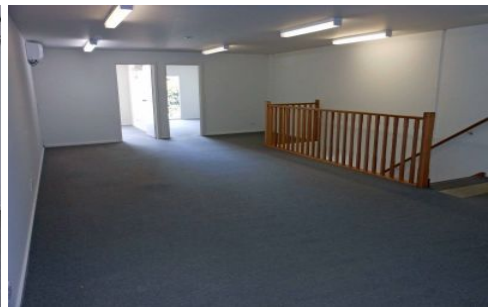




CRABTREES

REAL ESTATE



7 Sir Laurence Drive SEAFORD VIC

Located within a short distance to major arterials including Eastlink (Frankston Freeway, Peninsula Link and Frankston-Dandenong Road, this modern freestanding office warehouse features the following;

- + 602sqm total building area
- + 134sqm total office
- + High clearance warehousing
- + Container height roller door
- + Small concrete rear yard area
- + Ample on site car spaces
- + Secure perimeter fencing with motorised gate

Price : annual
Building Size : 602 sqm
View : <https://www.crabtrees.com.au/lease/vic/bayside/seaford/commercial/industrial/5862108>

For further information or to arrange an inspection please phone Andrew Loudon on 0422 618 975 or Megan Miles on

<https://www.crabtrees.com.au>

Crabtrees Real Estate is built on history, reputation and expertise. We offer a level of knowledge others can't match.