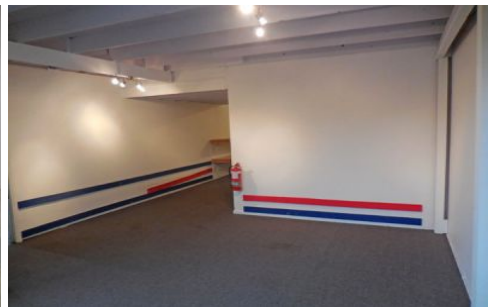
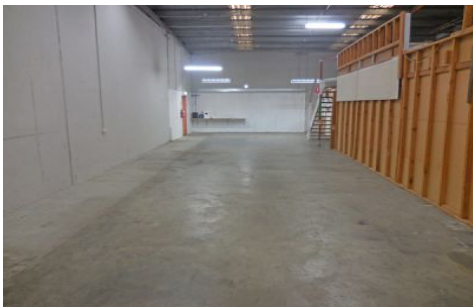




CRABTREES

REAL ESTATE



17/14-26 Audsley Street CLAYTON VIC

Situated within a popular Clayton industrial estate is this fantastic office warehouse featuring the following:

- + Air-conditioned, carpeted & partitioned office of 100sqm*
- + Reasonable warehouse clearance of 5m approx.
- + Container height roller door
- + On-site parking
- + 200m* from Clayton Shopping precinct

Price : annual
Building Size : 212 sqm
View : <https://www.crabtrees.com.au/lease/vic/east/clayton/commercial/industrial/5862151>

<https://www.crabtrees.com.au>

Crabtrees Real Estate is built on history, reputation and expertise. We offer a level of knowledge others can't match.