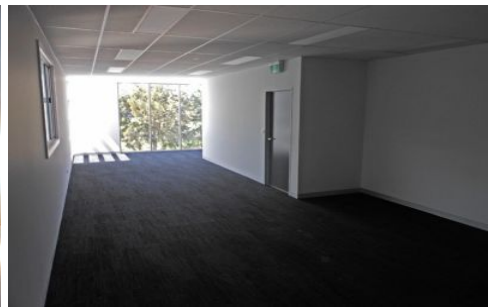




# CRABTREES

REAL ESTATE



**8/20 Edward Street OAKLEIGH VIC**

**3** 

Outstanding new office warehouse located in the heart of Oakleigh featuring:

- + Excellent warehouse height of 7 metres approx
- + Container height motorised roller door
- + Carpeted and air conditioned first floor office
- + Adjacent parklands and soccer ground
- + Available NOW

Rare new industrial development in the heart of Oakleigh that is close to train stations, all amenities, arterial roads and some of the best cafe's in Melbourne.

**Price** : \$32,850p/a  
**Building Size** : 219 sqm  
**View** : <https://www.crabtrees.com.au/lease/vic/east/oakleigh/commercial/industrial/5862153>

<https://www.crabtrees.com.au>

Crabtrees Real Estate is built on history, reputation and expertise. We offer a level of knowledge others can't match.