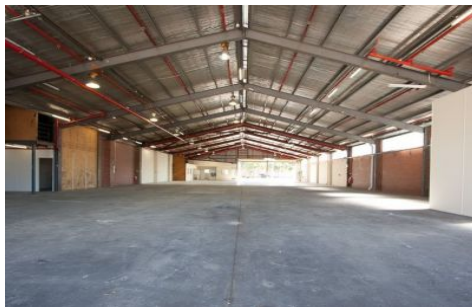




CRABTREES

REAL ESTATE



2 Park Road OAKLEIGH VIC

Excellent opportunity to secure this versatile office warehouse ideally located just off Princes Highway in the heart of Oakleigh.

Features include:

- + Good warehouse height
- + Great access via 5 roller doors
- + Front and rear roller door access
- + Securely fenced rear yard
- + Fully sprinklered
- + Neat and presentable office/showroom

For all enquiries please contact:

Steven Salopek 0400 341 226
Chris McKenzie 0418 321 065

Price : \$2,050,000
Building Size : 1528 sqm
Land Size : 2463 sqm
View : <https://www.crabtrees.com.au/sale/vic/east/oakleigh/commercial/industrial/5862192>



Chris McKenzie
(03) 95678888

<https://www.crabtrees.com.au>

Crabtrees Real Estate is built on history, reputation and expertise. We offer a level of knowledge others can't match.