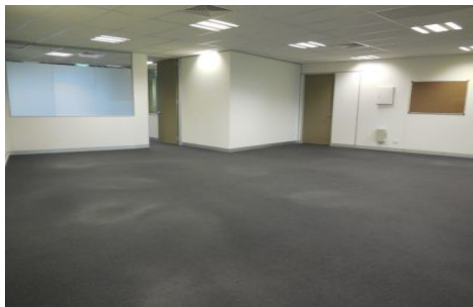
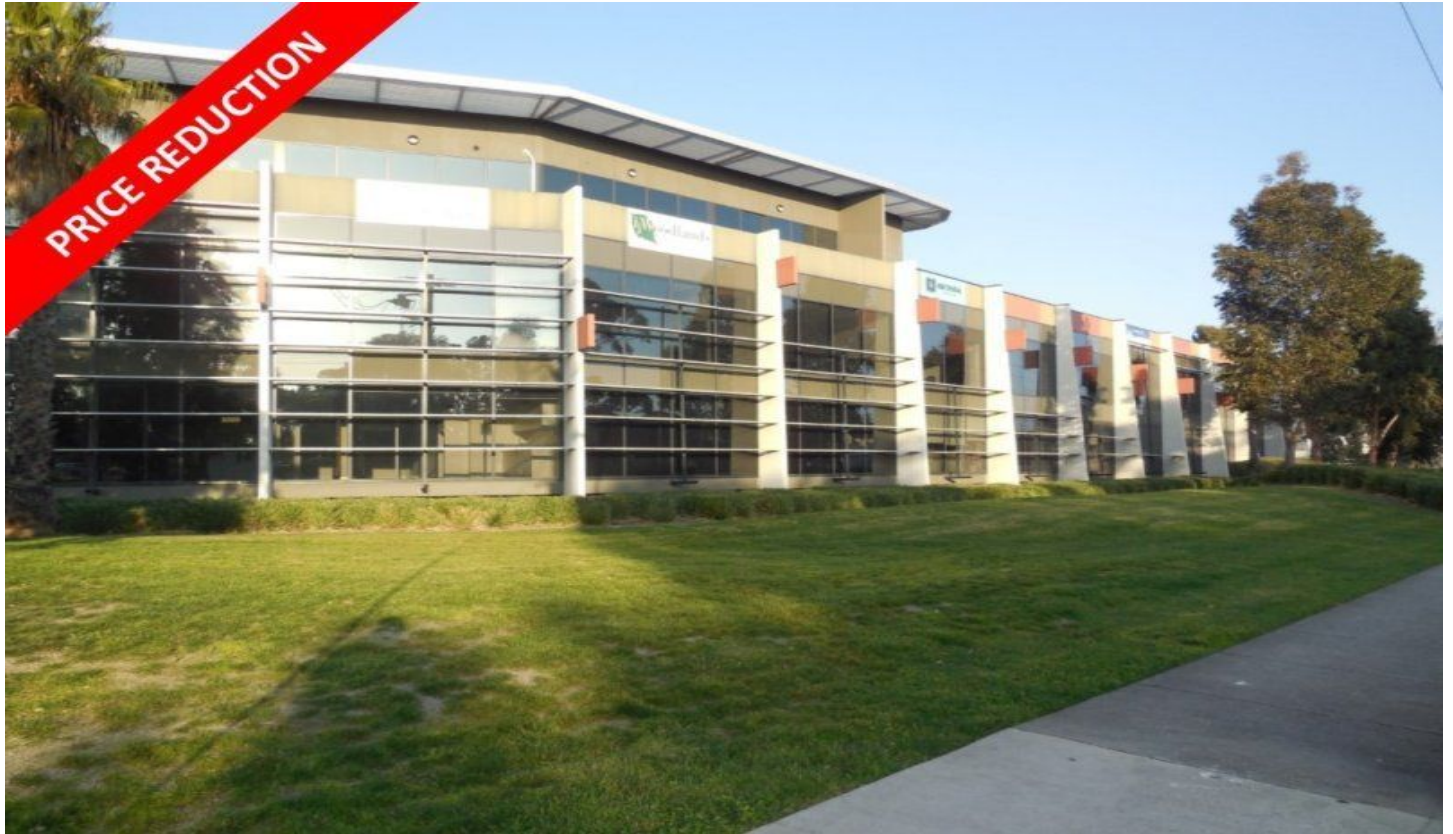




# CRABTREES

REAL ESTATE



## 10/202-220 Ferntree Gully Road NOTTING HILL VIC

MAKE US AN OFFER!!!

Boutique style ground floor office of approx 163sqm. From this location there is easy access to all major arterial roads including the Princes Highway, Ferntree Gully Road and Monash freeway. Offering excellent visibility to passing traffic this impressive office space is readily accessible to visitors and employees.

Key Office Features:

- + Quality internal fit-out
- + Male and Female amenities
- + Kitchenette including ZIP tap
- + Excellent natural light
- + On grade and basement car parks

**Price** : Make us an Offer  
**Building Size** : 163 sqm  
**View** : <https://www.crabtrees.com.au/sale/vic/east/notting-hill/commercial/offices/5862247>

<https://www.crabtrees.com.au>

Crabtrees Real Estate is built on history, reputation and expertise. We offer a level of knowledge others can't match.