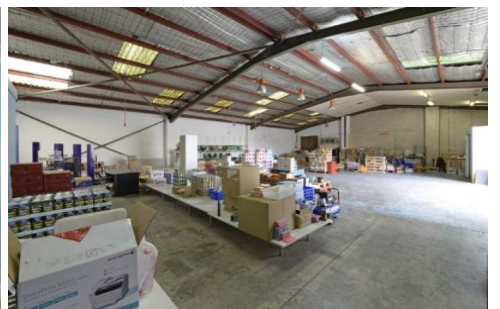
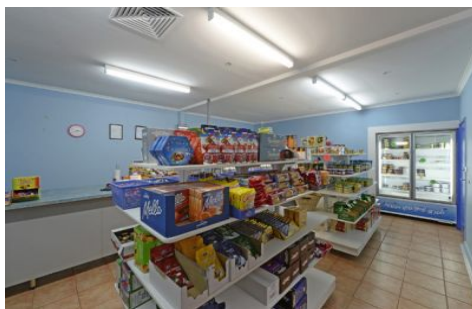




CRABTREES

REAL ESTATE



10 Meriton Plc CLAYTON SOUTH VIC

Auction Thursday 22nd May 2014 at 1pm onsite

Great opportunity to secure an office warehouse of 494sqm* ideally located on a corner with 3 access points.

Features:

- + Includes office, showroom of 167sqm
- + Warehouse with side roller door access of approximately 327sqm
- + Secure rear storage yard with both street and warehouse access
- + Main entrance to showroom and office

Price : POA
Building Size : 494 sqm
View : <https://www.crabtrees.com.au/sale/vic/south-east/clayton-south/commercial/industrial/5862330>

<https://www.crabtrees.com.au>

Crabtrees Real Estate is built on history, reputation and expertise. We offer a level of knowledge others can't match.