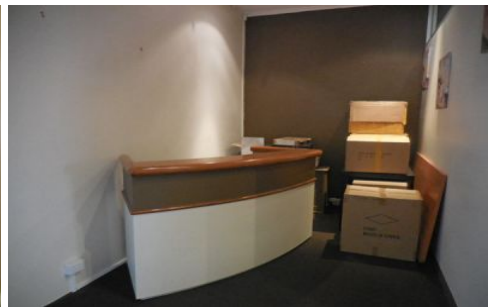
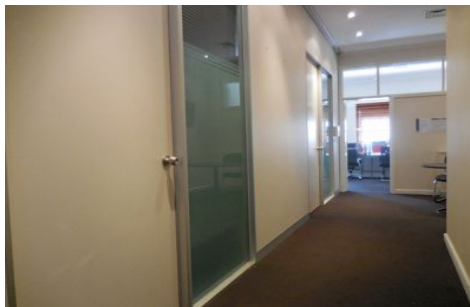
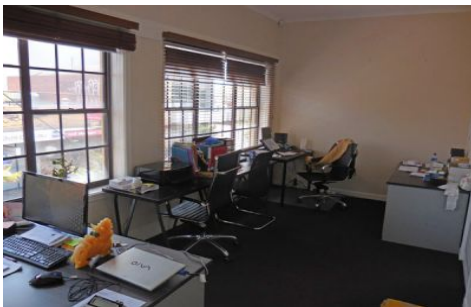




CRABTREES

REAL ESTATE



1st Floor/6 Station Street OAKLEIGH VIC

1st floor office centrally located in Oakleigh with heavy foot traffic featuring the following:

- + Carpeted & air conditioned throughout
- + 3 partitioned offices
- + Reception area & waiting room
- + Video security entrance
- + Toilet & kitchen facilities
- + 50m from Oakleigh Train Station and vibrant Eaton Mall

Price : annual
Building Size : 75 sqm
View : <https://www.crabtrees.com.au/lease/vic/east/oakleigh/commercial/offices/5862345>

<https://www.crabtrees.com.au>

Crabtrees Real Estate is built on history, reputation and expertise. We offer a level of knowledge others can't match.