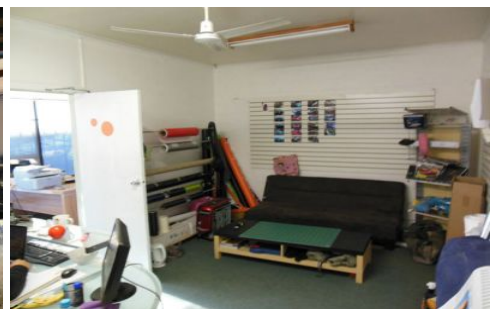
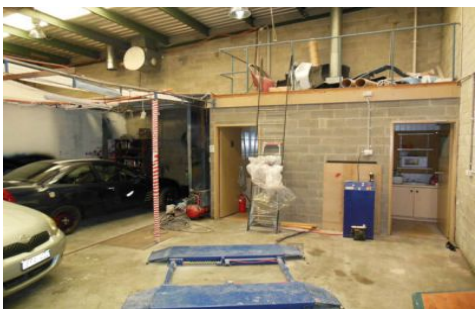




CRABTREES

REAL ESTATE



24 Clifford Street HUNTINGDALE VIC

An excellent warehouse/storage solution, with great access to North Road, Huntingdale Road and the Princes Highway.

- + Newly carpeted office space.
- + Roller door access.
- + Amenities and sink.
- + On site car parking.
- + Will not last long!

Price : annual
Building Size : 147 sqm
View : <https://www.crabtrees.com.au/lease/vic/east/huntingdale/commercial/industrial/5862362>

<https://www.crabtrees.com.au>

Crabtrees Real Estate is built on history, reputation and expertise. We offer a level of knowledge others can't match.