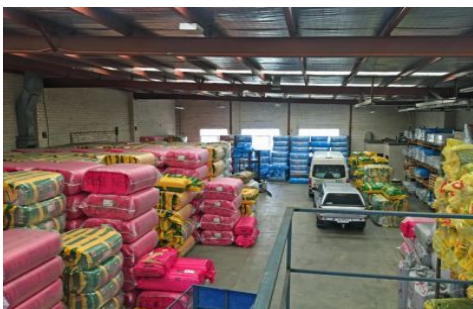




# CRABTREES

REAL ESTATE



## 5/173 Wellington Road CLAYTON VIC

Clean, functional and well located Clayton office warehouse close to Princes HWY, Springvale Road and Clayton Road.

Features include:

- + Good warehouse height
- + Motorised roller door
- + Office space with mezzanine storage
- + On site car parking
- + Suit many uses

**Price** : annual  
**Building Size** : 569 sqm  
**View** : <https://www.crabtrees.com.au/lease/vic/east/clayton/commercial/industrial/5862367>

<https://www.crabtrees.com.au>

Crabtrees Real Estate is built on history, reputation and expertise. We offer a level of knowledge others can't match.