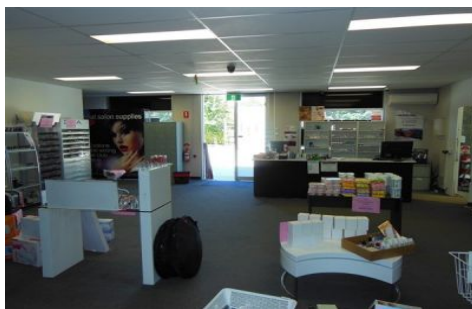




CRABTREES

REAL ESTATE



4/125 Highbury Road BURWOOD VIC

5

This architecturally designed showroom, office and warehouse with mezzanine is at the front of this quality development with main road exposure and is minutes from the Monash M1 Freeway via Warrigal Road.

Price : Call Agent Now
Building Size : 601 sqm
View : <https://www.crabtrees.com.au/lease/vic/east/burwood/commercial/offices/5862376>

Features:

- + Large showroom of 191m2*
- + First floor air-conditioned office of 92m2*
- + Warehouse of 116m2*
- + Mezzanine of 202m2* (can be removed)
- + Motorised Roller Door
- + Separate toilet and kitchen facilities on both levels
- + On site cafe`

Located on the north side of Highbury Road, west of Huntingdale Rd and east of Warrigal Rd just 17 kms from the CBD. The property is conveniently located next to

<https://www.crabtrees.com.au>

Crabtrees Real Estate is built on history, reputation and expertise. We offer a level of knowledge others can't match.