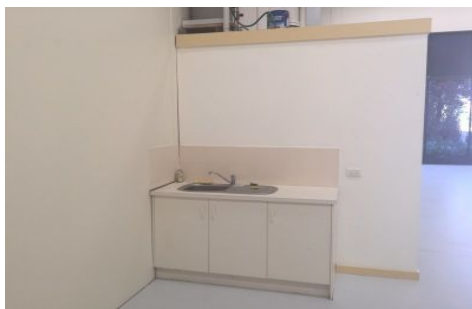




CRABTREES

REAL ESTATE



1/1 Laser Drive ROWVILLE VIC

6 

Located prominently on Laser Drive, this tidy warehouse with street exposure features the following;

- + 283sqm of clean and clear warehousing
- + Internal height to 6.8m
- + Motorised RSD
- + Presentable glass facade allowing for great natural light
- + Ample onsite carparking and cafe directly next door!
- + Inspect TODAY!

Price : CONTACT AGENT
Building Size : 283 sqm
View : <https://www.crabtrees.com.au/lease/vic/east/rowville/commercial/industrial/5862409>

<https://www.crabtrees.com.au>

Crabtrees Real Estate is built on history, reputation and expertise. We offer a level of knowledge others can't match.