



CRABTREES

REAL ESTATE



1-5 Nantilla Road NOTTING HILL VIC

Now complete and ready for occupancy is this is an extremely rare office warehouse facility in a tightly held location.

Located only moments to the M1 freeway and surrounded by major international organisations such as Mercedes-Benz, NEC, Adidas & Monash University this facility is one with the lot!

Features:

- + 2,466sqm high quality office warehouse
- + Two level office of 1,009sqm with an elevator
- + Office areas are fully carpeted and air-conditioned throughout
- + Male & Female amenities for both office and warehouse staff Including shower and kitchen facilities

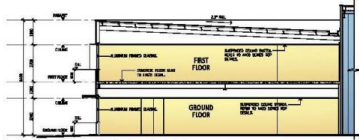
Price : Terms Agreed
Building Size : 2466 sqm
View : <https://www.crabtrees.com.au/sale/vic/east/notting-hill/commercial/industrial/5862422>



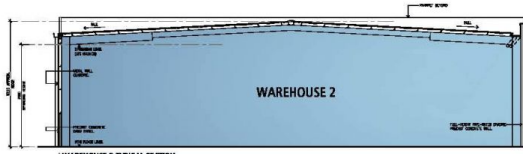
Luke Pitcher
(03) 95678888

<https://www.crabtrees.com.au>

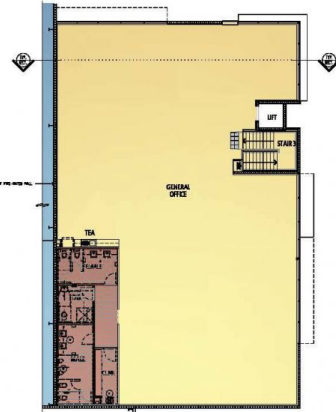
Crabtrees Real Estate is built on history, reputation and expertise. We offer a level of knowledge others can't match.



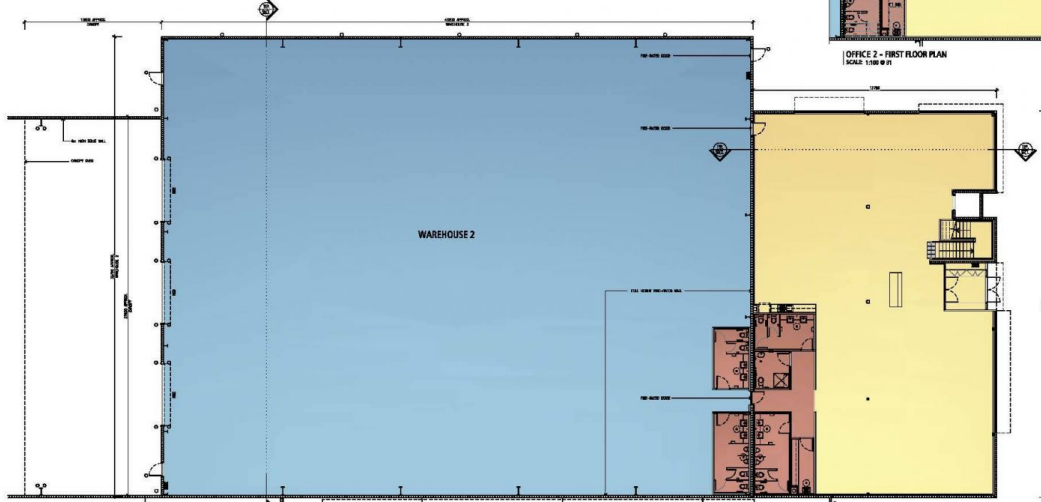
OFFICE 2 TYPICAL SECTION
SCALE: 1:100 @ A1



WAREHOUSE 2 TYPICAL SECTION
SCALE: 1:100 @ B1



OFFICE 2 - FIRST FLOOR PLAN
SCALE: 1:100 @ B1



WAREHOUSE 2 PLAN
SCALE: 1:100 @ B1

OFFICE 2 - GROUND FLOOR PLAN
SCALE: 1:100

Proposed Office Warehouse
Precision International

MARKETING
UNIT 2



DATE: March, 2003
DRAWN BY: MK
SCALE: 1:250 @ A3

13057
MK02 B

