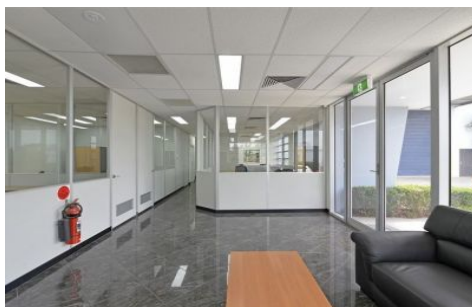




CRABTREES

REAL ESTATE



2 Torteval Place CLAYTON VIC

Crabtrees are pleased to offer for lease this solid, near new office warehouse of 1,305sqm approx. centrally located in Clayton near the corner of McNaughton Rd just off Princes Highway.

Price : UNDER OFFER
Building Size : 1305 sqm
View : <https://www.crabtrees.com.au/lease/vic/east/clayton/commercial/industrial/5862628>

Features:

- + High clearance warehouse of 1,148sqm approx
- + Modern single level offices of 157sqm approx
- + Offices include a reception, boardroom and a mix of offices and open plan
- + Kitchen and separate male & female facilities
- + Container height roller door

<https://www.crabtrees.com.au>

Crabtrees Real Estate is built on history, reputation and expertise. We offer a level of knowledge others can't match.