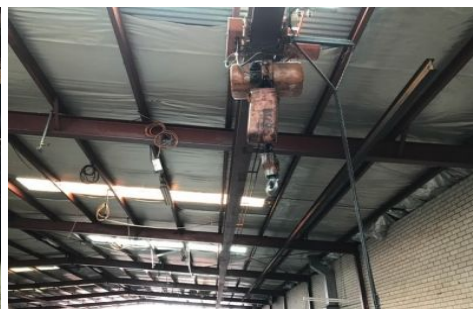





# CRABTREES

REAL ESTATE



## 20-22 Kembla Street CHELTENHAM VIC

12 

Two solid office warehouses of approximately 1,065sqm EACH with a combines area of 2,130sqm ideally located in Cheltenham just of Centre Dandenong Road near DFO Moorabbin.

**Price** : CALL TO INSPECT NOW  
**Building Size** : 2130 sqm  
**View** : <https://www.crabtrees.com.au/lease/vic/bayside/cheltenham/commercial/industrial/5862642>

### Features:

- + Dual front roller door access
- + Includes separate office blocks and facilities
- + Space to unload a container
- + Above average power supply\*
- + Excellent natural light

<https://www.crabtrees.com.au>

Crabtrees Real Estate is built on history, reputation and expertise. We offer a level of knowledge others can't match.